



**India Meteorological Department
(Ministry of Earth Sciences)**

BULLETIN NO. 12 (ARB/01/2023)

TIME OF ISSUE: 2045 HOURS IST

DATED: 07.06.2023

FROM: INDIA METEOROLOGICAL DEPARTMENT (FAX NO. 24643965/24699216/24623220)

**TO: CONTROL ROOM, NDM, MINISTRY OF HOME AFFAIRS (FAX.NO. 23093750)
CONTROL ROOM NDMA (FAX.NO. 26701729)**

CABINET SECRETARIAT (FAX.NO.23012284, 23018638)

PS TO HON'BLE MINISTER FOR S & T AND EARTH SCIENCES (FAX NO.23316745)

SECRETARY, MOES (FAX NO. 24629777)

H.Q. (INTEGRATED DEFENCE STAFF AND CDS) (FAX NO. 23005137/23005147)

DIRECTOR GENERAL, DOORDARSHAN (23385843)

DIRECTOR GENERAL, AIR (23421105, 23421219)

PIB MOES (FAX NO. 23389042)

UNI (FAX NO. 23355841)

D.G. NATIONAL DISASTER RESPONSE FORCE (NDRF) (FAX NO. 26105912, 2436 3260)

DIRECTOR, PUNCTUALITY, INDIAN RAILWAYS (FAX NO. 23388503)

CHIEF SECRETARY, KERALA (FAX NO. 0471-2327176)

ADMINISTRATOR, LAKSHADWEEP ISLANDS (FAX NO. 0413-262184)

CHIEF SECRETARY, TAMILNADU (FAX NO. 044-25672304)

CHIEF SECRETARY, GOA (FAX NO. 0832-2415201)

CHIEF SECRETARY, KARNATAKA (FAX NO. 080-22258913)

CHIEF SECRETARY, MAHARASHTRA (FAX NO. 022- 22028594)

CHIEF SECRETARY, GUJARAT (FAX NO. 079-23250305)

CHIEF SECRETARY, DAMAN & DIU (FAX NO. 0260-2230775)

CHIEF SECRETARY, DADRA & NAGAR HAVELI (FAX NO. 0260-2645466)

Sub: Very Severe Cyclonic Storm “Biparjoy” (pronounced as “Biporjoy”) over eastcentral Arabian Sea

The very severe cyclonic storm “Biparjoy” (pronounced as “Biporjoy”) over eastcentral Arabian Sea moved nearly northwards with a speed of 9 kmph during past 6 hours and lay centered at 1730 hours IST of today, the 07th June, 2023 over the same region near latitude 13.3°N and longitude 66.2 °E, about 860 km west-southwest of Goa, 940 km southwest of Mumbai, 1000 km south-southwest of Porbandar and 1300 km south of Karachi.

It would intensify further and move nearly northwards during next 12 hours. It would then move north-northwestwards during subsequent 3 days.

Forecast track and intensity are given below:

Date/Time(IST)	Position (Lat. °N/ long. °E)	Maximum sustained surface wind speed (Kmph)	Category of cyclonic disturbance
07.06.23/1730	13.3/66.2	120-130 gusting to 145	Very Severe Cyclonic Storm
07.06.23/2330	13.6/66.1	125-135 gusting to 150	Very Severe Cyclonic Storm
08.06.23/0530	13.9/66.0	130-140 gusting to 155	Very Severe Cyclonic Storm
08.06.23/1130	14.2/65.9	135-145 gusting to 160	Very Severe Cyclonic Storm
08.06.23/1730	14.5/65.8	135-145 gusting to 160	Very Severe Cyclonic Storm
09.06.23/0530	15.1/65.5	135-145 gusting to 160	Very Severe Cyclonic Storm
09.06.23/1730	15.7/65.2	145-155 gusting to 170	Very Severe Cyclonic Storm
10.06.23/0530	16.4/64.9	145-155 gusting to 170	Very Severe Cyclonic Storm
10.06.23/1730	17.1/64.5	145-155 gusting to 170	Very Severe Cyclonic Storm
11.06.23/0530	17.8/64.1	135-145 gusting to 160	Very Severe Cyclonic Storm
11.06.23/1730	18.5/63.6	135-145 gusting to 160	Very Severe Cyclonic Storm
12.06.23/0530	19.2/63.1	130-140 gusting to 155	Very Severe Cyclonic Storm
12.06.23/1730	19.9/62.5	125-135 gusting to 150	Very Severe Cyclonic Storm

(i) Wind warning:

7th June: Gale wind speed reaching 120-130 kmph gusting to 145 kmph is prevailing over eastcentral Arabian Sea and adjoining areas of westcentral & south Arabian Sea.

Squally weather with wind speed reaching 35-45 kmph gusting to 55 kmph is likely over adjoining areas of south Arabian Sea and along & off north Kerala-Karnataka-Goa coasts.

8th June: Gale wind speed reaching 130-140 kmph gusting to 155 kmph is likely to prevail over eastcentral Arabian Sea and adjoining areas of westcentral & south Arabian and it is likely to increase and become 135-145 kmph gusting to 160 kmph during evening of 8th June over the same area.

Squally weather with wind speed reaching 35-45 kmph gusting to 55 kmph is likely along & off Karnataka-Goa-Maharashtra coasts.

9th June: Gale wind speed reaching 135-145 kmph gusting to 160 kmph is likely to prevail over central Arabian Sea.

Squally wind speed reaching 40-50 kmph gusting to 60 kmph is likely over adjoining areas of South Arabian Sea. Squally weather with wind speed reaching 35-45 kmph gusting to 55 kmph is likely along & off Karnataka-Goa-Maharashtra coasts.

10th June: Gale wind speed reaching 145-155 kmph gusting to 170 kmph is likely to prevail over central Arabian Sea.

Squally wind speed reaching 40-50 kmph gusting to 60 kmph is likely over adjoining areas of north Arabian Sea. Squally weather with wind speed reaching 35-45 kmph gusting to 55 kmph is likely along & off Karnataka-Goa-Maharashtra coasts.

11th June: Gale wind speed reaching 135-145 kmph gusting to 160 kmph is likely to prevail over central & adjoining north Arabian Sea.

Squally weather with wind speed reaching 35-45 kmph gusting to 55 kmph is likely along & off Maharashtra-Gujarat coasts.

12th June: Gale wind speed reaching 130-140 kmph gusting to 155 kmph is likely to prevail over westcentral and adjoining northwest & eastcentral Arabian Sea.

Squally weather with wind speed reaching 35-45 kmph gusting to 55 kmph is likely along & off Maharashtra-Gujarat coasts.

(iii) Sea condition

7th June: Phenomenal Sea condition is likely to prevail over eastcentral Arabian Sea and adjoining westcentral & south Arabian. Sea condition is likely to be rough along & off north Kerala-Karnataka-Goa coasts.

8th June:

Sea condition is likely to be phenomenal over central Arabian Sea and adjoining south Arabian Sea. Sea condition is likely to be rough along & off Karnataka-Goa-Maharashtra coasts.

9th June: Sea condition is likely to be phenomenal over central Arabian Sea. Sea condition is likely to be rough over adjoining areas of south Arabian Sea and along & off Karnataka-Goa-Maharashtra coasts.

10th June: Sea condition is likely to be phenomenal over central Arabian Sea. Sea condition is likely to be rough over adjoining areas of north Arabian Sea and along & off Karnataka-Goa-Maharashtra coasts.

11th June: Sea condition is likely to be phenomenal to very high over central & adjoining north Arabian Sea. Sea condition is likely to be rough to very rough over adjoining areas of northeast Arabian Sea and rough along & off Maharashtra-Gujarat coasts.

12th June: Sea condition is likely to be phenomenal over westcentral and adjoining northwest & eastcentral Arabian Sea. Sea condition is likely to be rough to very rough over adjoining areas of northeast Arabian Sea and rough along & off Maharashtra-Gujarat coasts.

(iv) Fishermen Warning (Graphics Attached)

- Total suspension of fishing operations over
 - eastcentral and adjoining westcentral & south Arabian Sea till 12th June.
 - westcentral and adjoining northwest Arabian Sea during 12-14th June
- Fishermen are advised not to venture into:
 - Central Arabian Sea till 13th June.
 - Adjoining areas of north Arabian Sea during 12th -13th June.
 - Adjoining areas of south Arabian Sea till 7th June.
- Those out at sea are advised to return to coast.

The system is under continuous surveillance and the next message will be issued at 2330 hours IST of today, the 7th June, 2023.

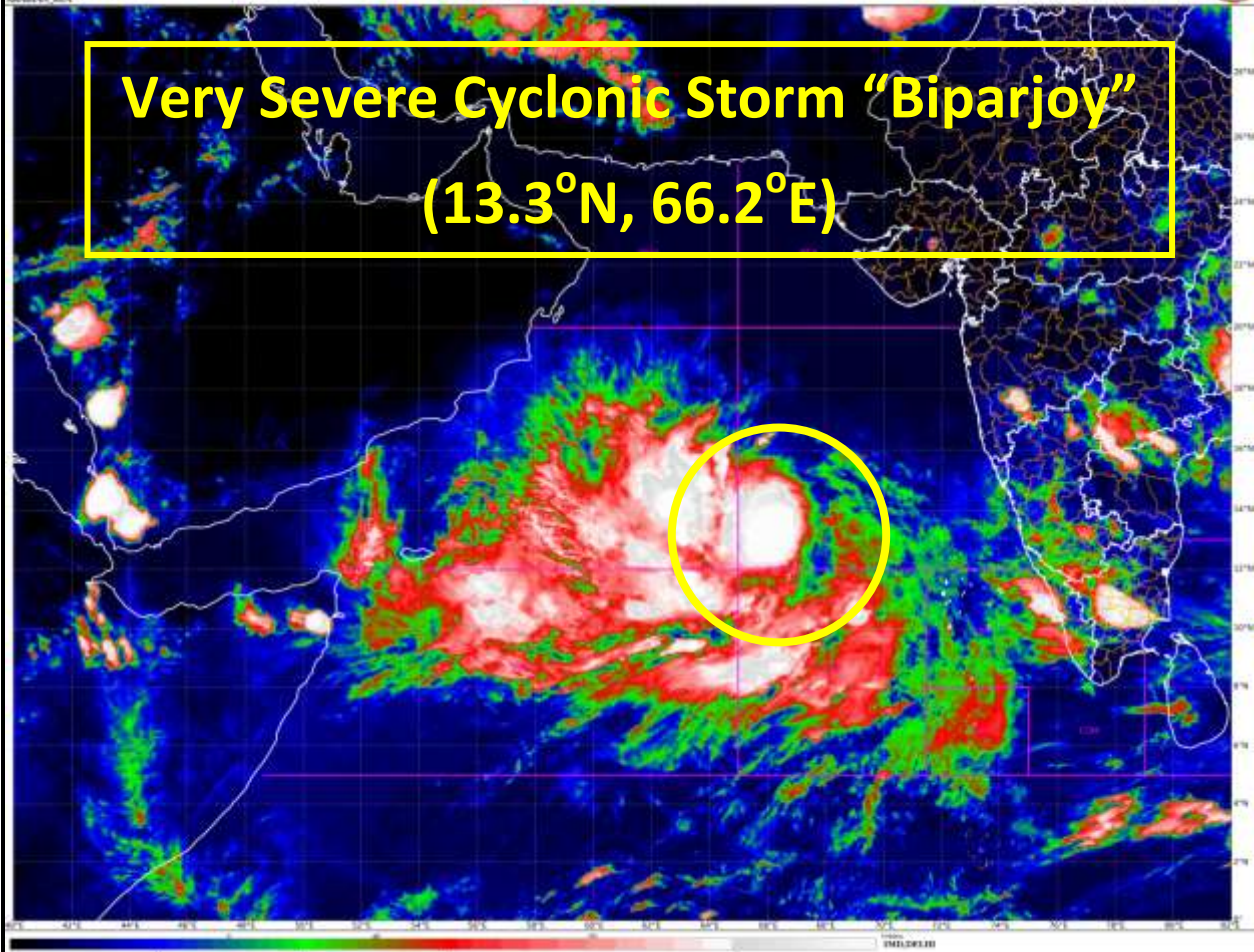
(Ananda Kumar Das)
Scientist F, Cyclone Warning Division, New Delhi

Copy to: ACWC Kolkata/ ACWC Chennai/ CWC Bhubaneswar/CWCVisakhapatnam/CWC Ahmedabad/ MO Port Blair/MC Raipur/MC Bhopal/MC Hyderabad/RMC Nagpur

LEGEND: Heavy Rainfall: 64.5 to 115.5mm, **Very Heavy Rainfall:** 115.6 to 204.4mm **Most Places:** more than 76% of total stations, **Isolated Places:** Less than 25% of total

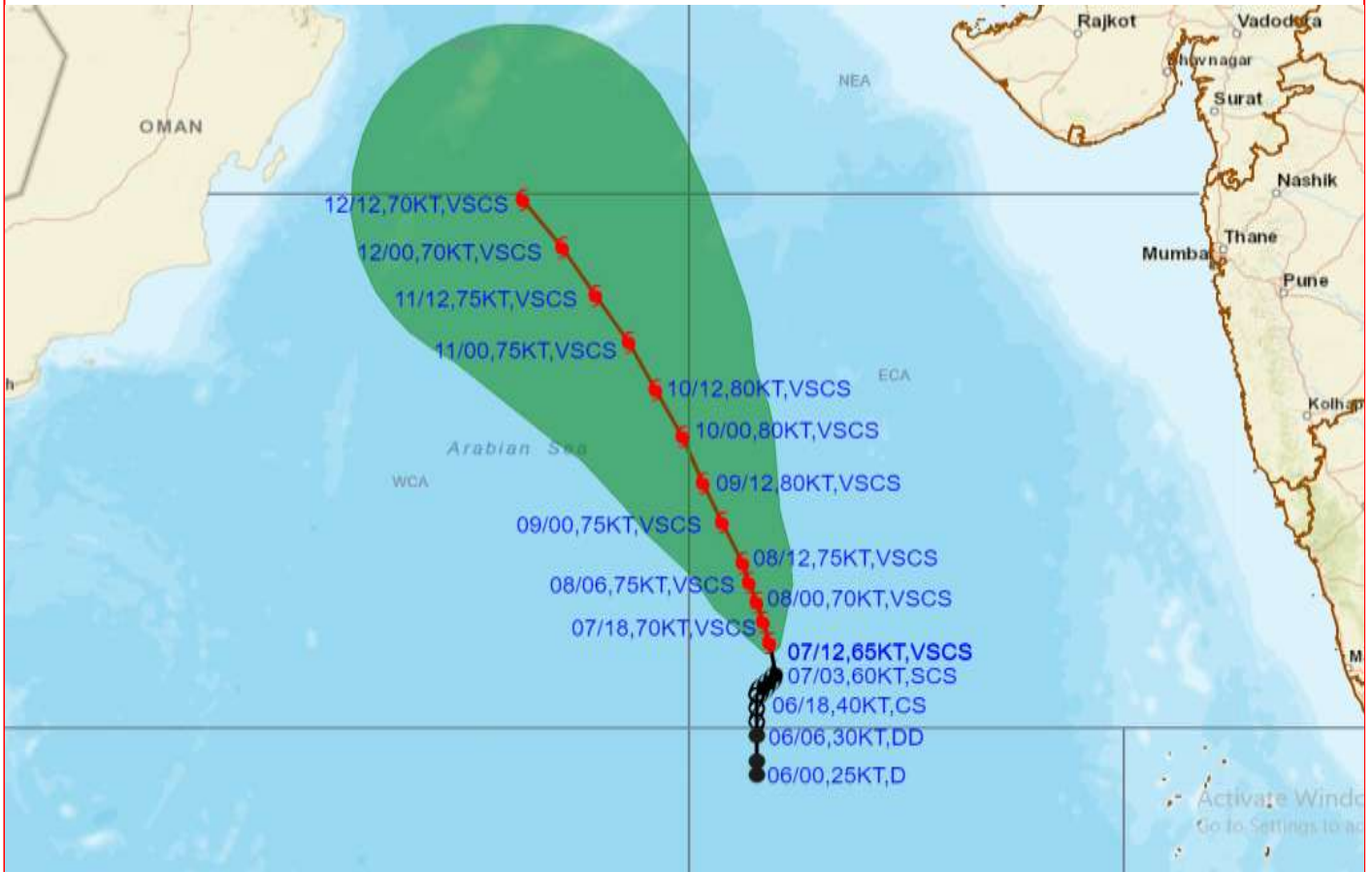


Very Severe Cyclonic Storm "Biparjoy"
(13.3°N, 66.2°E)





OBSERVED AND FORECAST TRACK ALONGWITH CONE OF UNCERTAINTY OF VERY SEVERE CYCLONIC STORM “BIPARJOY” OVER EASTCENTRAL ARABIAN SEA BASED ON 1200 UTC (1730 IST) OF 07TH JUNE 2023.



DATE/TIME IN UTC
IST=UTC + 0530

L: LOW PRESSURE AREA

WML: WELL MARKED LOW PRESSURE AREA

D: DEPRESSION (17-27 KT)

DD: DEEP DEPRESSION (28-33 KT)

CS: CYCLONIC STORM (34-47 KT)

SCS: SEVERE CYCLONIC STORM (48-63KT)

VSCS: VERY SEVERE CYCLONIC STORM (64-89 KT)

ESCS: EXTREMELY SEVERE CYCLONIC STORM (90-119 KT)

SuCS: SUPER CYCLONIC STORM (≥ 120 KT)

● LESS THAN 34 KT

○ 34-47 KT

○ ≥ 48 KT

— OBSERVED TRACK

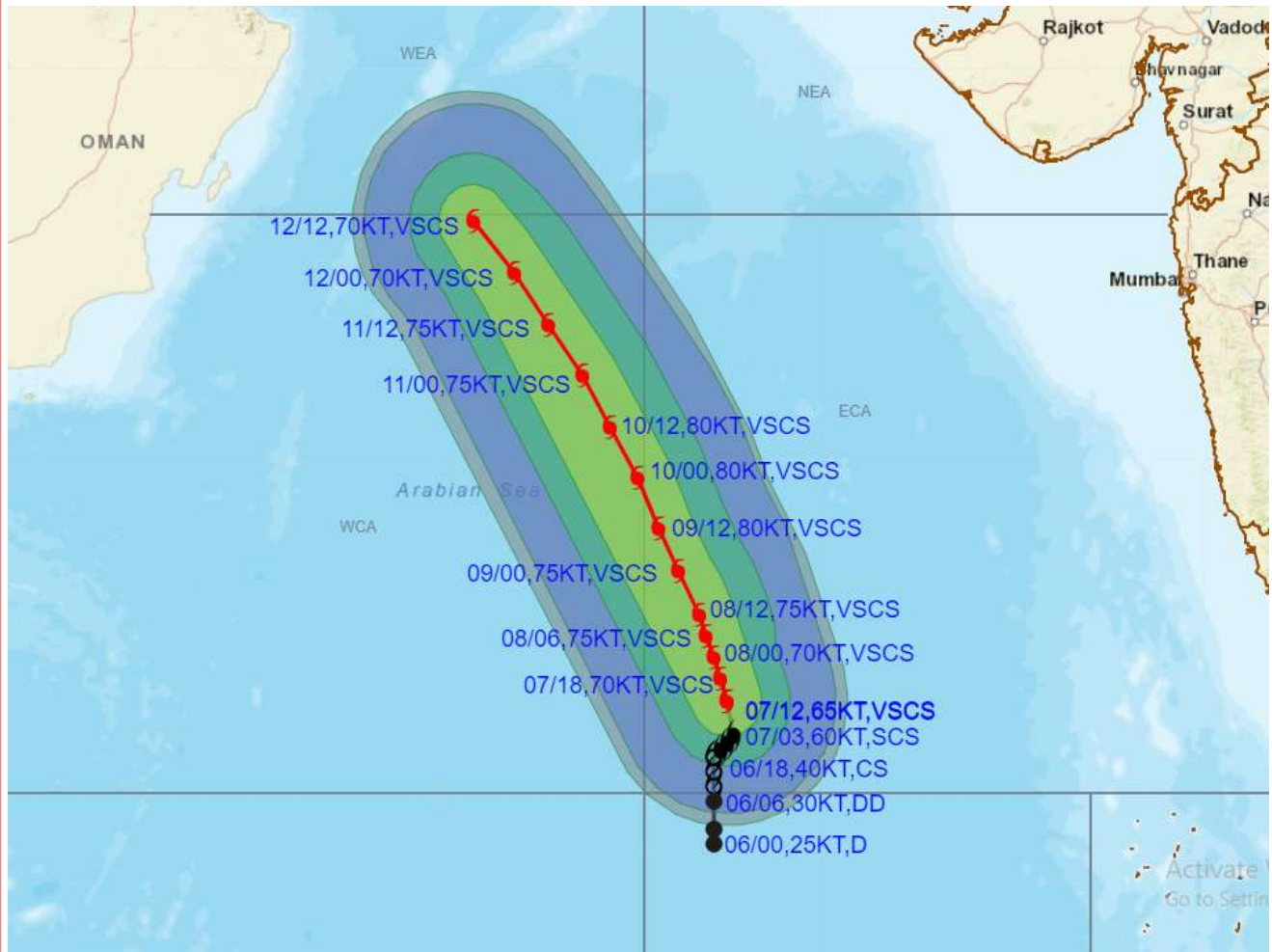
— FORECAST TRACK

▲ CONE OF UNCERTAINTY

STATIONS	DISTANCE(KM) AND DIRECTION FROM STATIONS		
	08.06.23/1200	09.06.23/1200	10.06.23/1200
PORBANDAR	890, SSW	810, SW	740, SW
BOMBAY / COLABA	890, WSW	890, WSW	900, WSW
GOA/PANJIM	870, W	930, W	1010, WNW
KARACHI AIRPORT	1160, S	1040, S	910, SSW
MASIRAH	1000, SE	860, SE	710, ESE



OBSERVED AND FORECAST TRACK ALONGWITH QUADRANT WIND DISTRIBUTION OF VERY SEVERE CYCLONIC STORM "BIPARJOY" OVER EASTCENTRAL ARABIAN SEA BASED ON 1200 UTC (1730 IST) OF 07TH JUNE 2023.



DATE/TIME IN UTC
 IST=UTC + 0530
 L: LOW PRESSURE AREA
 WML: WELL MARKED LOW PRESSURE AREA
 D: DEPRESSION (17-27 KT)
 DD: DEEP DEPRESSION (28-33 KT)
 CS: CYCLONIC STORM (34-47 KT)
 SCS: SEVERE CYCLONIC STORM (48-63KT)
 VSCS: VERY SEVERE CYCLONIC STORM (64-89 KT)
 ESCS: EXTREMELY SEVERE CYCLONIC STORM (90-119 KT)
 SuCS: SUPER CYCLONIC STORM (≥ 120 KT)

● LESS THAN 34 KT
 ○ 34-47 KT
 ⊙ ≥ 48 KT
 — OBSERVED TRACK
 — FORECAST TRACK
 ▲ CONE OF UNCERTAINTY
 AREA OF MAXIMUM SUSTAINED WIND SPEED:
 ■ 28-33 KT (52-61 KMPH)
 ■ 34-49 KT (62-91 KMPH)
 ■ 50-63 KT (92-117 KMPH)
 ■ ≥ 64 KT (≥118 KMPH)

IMPACT OVER THE SEA

MSW (knot/kmph)	Impact	Action
28-33 (52-61)	Very rough seas	Total suspension of fishing operations
34-49 (62-91)	High to very high seas	Total suspension of fishing operations
50-63 (92-117)	Very high seas	Total suspension of fishing operations
≥ 64 (≥118)	Phenomenal	Total suspension of fishing operations

Fishermen warning graphics

